

# LIQUID PIGMENTS

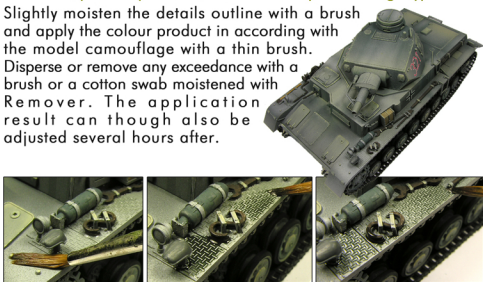


HOW TO USE  
LP01

## TANKS & VEHICLES DETAIL EMPHASIZER

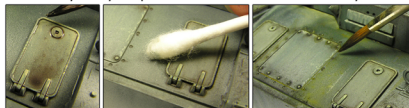
### How to emphasize prominent details on any camouflage type.

Slightly moisten the details outline with a brush and apply the colour product in according with the model camouflage with a thin brush. Disperse or remove any exceedance with a brush or a cotton swab moistened with Remover. The application result can though also be adjusted several hours after.



### Liquid Pigments as filters.

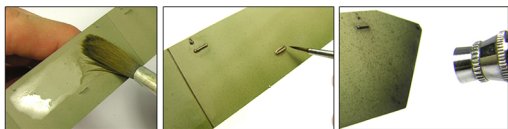
You can also apply the product on flat surfaces in order to slightly change the tones with perfect, progressive and extremely easy to perform shadows. The fluidity of the



product ensures the best melt among the pigments and allows to create color effects in one or more applications, directly over the treated surface. We suggest to fix the applications on large surfaces with transparent varnish.

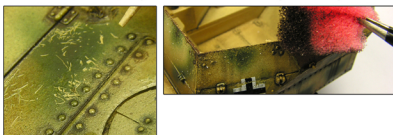
### Emphasize recesses and paneling.

Slightly moisten with a brush the recesses to be treated and then apply with a fine brush the product, along the engraved lines or at the intersection between them. Remove any exceedance with a brush or a cotton swab moistened in Remover.



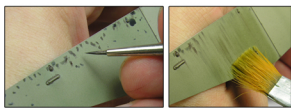
### Various techniques.

The Liquid Pigments can also be applied with sponges, cloths, or sprayed out with a brush. These different techniques can well combine with the paint scratch; using small drops of Cleaner Lifecolor in order to soften the paint and scratching it easily out.



### Oil color method.

Apply on the edge of the surface to be treated, small drops of the product, of the chosen colours, then, with a flat brush stretch down the applied tones.



### Color modulation.

Smoothly airbrushed on any camouflage, the darker tones can be used as modulation color technique and can create pleasant and realistic shades.

